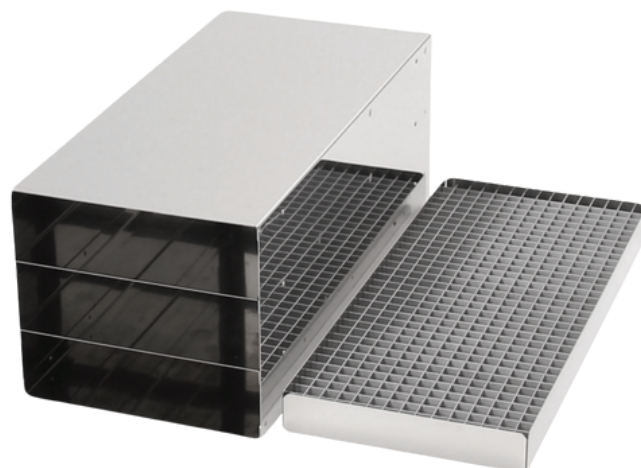


HORIZONTAL COLD STORES

Horizontal cold stores (HCS) are placed on the shelves of upright freezers and hold trays or storage bins. Horizontal outers have access from the front, also known as front access units. The benefits of a front access rack means the user only has to remove one tray to gain access to the item required, while side access racks mean the user has to remove the whole unit from the freezer. Horizontal cold stores are manufactured from aluminium or stainless steel. They can be made in any size to suit the requirements of the end user. Most horizontals are designed to accommodate trays which hold cryoboxes or microtiter plates. Divided trays can also be stored in a horizontal which can maximize the usage from the freezer.

Horizontal units are available in a range of different designs. Most horizontal outers hold between 3 and 7 trays, however the size of a unit can be designed to fit any freezer. The size of the aperture depends on the size of the item wished to be stored. Labmode are able to design a rack which has different size apertures, or with removable shelves thereby allowing for different size items to be stored in the same unit.



Stainless steel HCS to store divided trays

Dimensions (mm)	Box Size / Boxes Per Rack	Part Number
295H x 145W x 290D	4" (100mm) / 4	AH274/2
295H x 145W x 290D	3" (75mm) / 6	AH274/3
295H x 145W x 290D	2" (50mm) / 10	AH274/5
420H x 140W x 560D	4" (100mm) / 12	AH179/3
420H x 140W x 560D	3" (75mm) / 20	AH179/5
420H x 140W x 560D	2" (50mm) / 28	AH179/7
235H x 141W x 560D	2" (50mm) / 16	AH506/4
235H x 141W x 560D	3" (75mm) / 12	AH506/3
290H x 140W x 560D	2" (50mm) / 20	AH039/5
340H x 140W x 560D	2" (50mm) / 24	AH073/6
230H x 140W x 560D	2" (50mm) / 16	AH940/4

Also available in stainless steel.
To order add SS to the end of the part number

BESPOKE RACKS

Should you require a bespoke front or side access rack please visit our website (www.labmode.co.uk) to fill in a quotation request. The information that will be required is the freezer make and model, maximum internal size of the shelf and the size of the item you require racking. If the size rack you require is not listed here check the freezer reference guides towards the back of the catalogue or website. Bespoke units can be produced to your specification.

